



**Motorcycle dual-purpose and Adventure  
Greece, Best of Greece on a BMW**

# Motorcycle dual-purpose and Adventure Greece, Best of Greece on a BMW

---

**Duração**

11 días

**Language**

en,es

**Dificuldade**

Alta

**Guia**

Sim

**Veículo de apoio**

Sim

---

Enjoy your Greek odyssey to the place that has been the birth place for democracy and a cradle of civilization. Great motorcycle riding on some of the best motorbike roads in Greece, all topped with traditional food and drinks, history, culture, nature, beaches, relaxation.





### 1 - Aeroporto de Salonica-Macedónia - Tessalônica - 30

Motorcycle Tour Greece - a dream has come true. Our English speaking guide will welcome you at Thessaloniki Airport. Transfer to the Hotel for your complimentary night. In the evening meet the Team, pick up your motorbike for the next Greek motorcycle adventure and attend the briefing.



### 2 - Tessalônica - Platamon - 184

Start your adventure riding to Karitsa. Visit Dion Archeological Park at the foot of Mount Olympus. Alexander the Great used to bring offerings to the Gods here, prior to military expeditions. Continue your journey to the Home of the mythological Greek Gods - enjoy a motorbike ride to Greece's Highest Mountain - Olympus. If the motorbikes would have existed back in the times, the Greek hero Hercules would have ridden one, for sure. Accommodation on Olympian Bay.



### 3 - Platamon - Lâmia - 310

Continue your journey to the Meteora. Ride to the middle of the sky to the famous Complex of Greek Monasteries at Meteora - UNESCO World Heritage Site. Evening in Lamia in this wonderful motorcycle tour Greece.



### 4 - Lâmia - Atenas - 275

Ride to the foot of Mount Parnassos to Delphi - the centre of unity of the ancient Greek World, where the Oracle of Apollo once spoke. Visit the ancient Theatre and the Sanctuary of Apollo and ride Athens. Accommodation in the capital city Athens, home of the Famous Parthenon. Evening in Athens.



### 5 - Atenas - Atenas - 0

Enjoy a rest day in Athens - the city of Gods. You can visit the Acropolis, climb Mount Lycabettus to enjoy a view of the Acropolis at sunset, watch the evzoni change the guard at Syntagma Square, buy souvenirs in Monastiraki and enjoy a relaxing walk in Athens most beautiful area - Plaka. Accommodation in Athens.



### 6 - Atenas - Pátras - 226

Leave Athens and head to the North of Peloponnese Peninsula. Watch the ships making way through the narrow Corinth Canal. With 6.3 km in length, the artificial canal links Corinth Gulf in Ionian Sea to Saronic Gulf in Aegean Sea, separating Peloponnese from the rest of Greece. Visit the Archaeological Park of Ancient Corinth and continue riding along the Gulf of Corinth. Evening in Patras.

### 7 - Pátras - Lêucade - 245

Ride across the famous Rio-Antirrio Bridge - the world's longest multi-span



cable-stayed bridges, recognized world-wide as an engineering masterpiece. Continue your Journey to Cape Lefkada, where allegedly, the Greek poet Sappho has hurled herself into the sea from a 30m high cliff. Accommodation on the Island of Lefkada.

---



### **8 - Léucade - Janina - 225**

Arta & Ioannina is still synonym with all the wealth of the World. Morning ride to the city of Arta – known for its 13 century byzantine castle and the Stone Bridge of Arta with its unique architecture. Stroll the streets of Arta and continue your ride to Ioannina. The city of Ioannina is home to the oldest byzantine fortress in Greece and famous for its silver and gold jewellery, traditional or modern design. Accommodation in Ioannina.

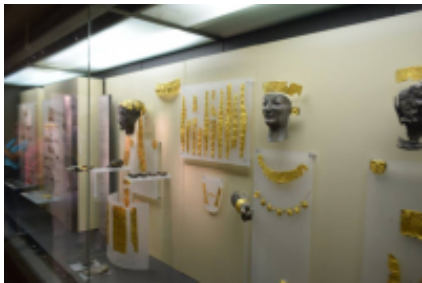
---



### **9 - Janina - Janina - 106**

You can enjoy a rest day and find out if the saying Living like the Pasha in Ioannina still applies or you can live like a motorbike rider in this motorcycle tour of Greece and take on the bended roads that cut through Tzoumerca National Park. Tzoumerca National Park, Peristeri & the Arachthos Canyon is a mountain region close to Ioannina, offering rides through traditional Greek villages, stone bridges, caves and 13 century monasteries built in the mountain rock. Accommodation in Ioannina.

---



### **10 - Janina - - 366**

Ride to Edessa trough Pindus National Park. Edessa is home to Karanos Waterfall – with 70 m in height, Karanos is the biggest waterfall in Greece. Walk behind the water curtain to enjoy great views of the falling water and the Macedonian fields. Accommodation in Thessaloniki.

---



### **11 - - Aeroporto de Salonica-Macedónia - 30**

Your Greece Motorcycle Tour ends here. Certainly the Oracle in Delphi has already shared with you visions of your next motorbike adventures. With a lot of memories and Greek souvenirs say goodbye to this motorcycle tours Greece and catch your flight back home.

---



**R 1200 GS LC**  
+ \$664.55



**F 850 GS**  
+ \$664.55



**R 1250 GS**  
+ \$851.09



**F 750 GS**  
+ \$664.55

Datas e preços

|                         | 2 pessoas, 1 moto em quarto duplo | 2 pessoas, 2 motos em quarto duplo | 1 pessoa, 1 moto em um quarto individual |
|-------------------------|-----------------------------------|------------------------------------|--|
| 2026-05-19 - 2026-05-29 | \$6,117.20                        | \$7,342.60                         | \$4,282.16                               |

prices per person

Incluído



Guia



Veículo de apoio



Seguro básico



Pequeno almoço



Hotel



Impostos locais



Mapas e Road Book



Mecânico



Aluguer de motos



Estacionamento



Motocicleta de substituição



Transferências

## Não incluído



Bebidas com álcool



Depósito



Jantar



Equipamentos de proteção enduro



Equipamento frio extremo



Ferris



Vôos



Alimento



Retorno de motocicleta na origem



Bilhetes para Parques Nacionais



Bebidas sem Álcool Água - Café



On route snacks



Gasolina e óleo



Foto - Recorde de vídeo



Dicas



Vistos

## Outra informação

### Custos de cancelamento antecipado

#### Important notice, in case of cancellation:

**The flight tickets, supplements and optional services subscribed in this tour regardless of the basic program, are subject to 100% of early cancellation costs.**