



**Motorcycle dual-purpose and Adventure
Cape to Cape, from Alicante to Fisterra
Enduro off Road 100%**

Motorcycle dual-purpose and Adventure Cape to Cape, from Alicante to Fisterra

Enduro off Road 100%

Duration

10 días

Difficulty

Normal-Hard

Support vehicle

Ja

Language

en,es,fr

Guide

Ja

The most unprecedented and fantastic enduro or trail motorcycle trip you can do! It perfectly combines the difficulty of the stages and crosses the entire Iberian Peninsula through the most incredible landscapes, from the Mediterranean in Alicante, to the Atlantic in Galicia. The elaborate route, exclusively for enduro motorcycles, will surprise you every meter you do on it. The Sierra Aitana, Albarracín, Valdezcaray, Montes de Oca, Riaño, Piedrafita, Pajares, Cangas de Narcea, Lugo, Santiago and Fisterra overwhelm when imagining a route like this. Very well selected accommodation and gastronomy so that the end of the daily stage is worth it!





1 - Calp - Calp - 0

Meeting in Calpe reception of participants from 7:00 p.m. Formalities and briefing ..



2 - Calp - Requena - 254

Stage 1 Calpe (Alicante) - Requena (Valencia) - 254 KM



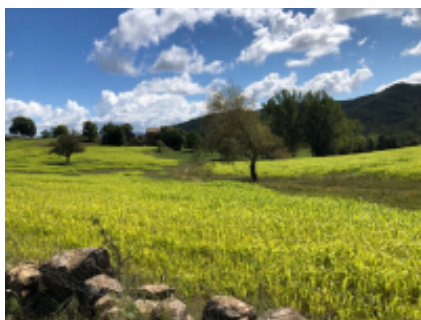
3 - Requena - Gallocanta - 231

Stage 2 Requena (Valencia) - Bellos (Gallocanta) (Zaragoza) - 231KM



4 - Gallocanta - Villoslada de Cameros - 274

Stage 3 Bellos (Gallocanta-Zaragoza) - Villoslada de Cameros (La Rioja) - 274 KM



5 - Villoslada de Cameros - Aguilar de Campoo - 279

Stage 4 Villoslada de Cameros (La Rioja) - Aguilar de Campoo (Palencia) -279 KM

6 - Aguilar de Campoo - Lugueros - 214

Stage 5 Aguilar de Campoo (Palencia) - Lugueros (León) -214 KM



7 - Lugueros - Cangas del Narcea - 266

Stage 6 Lugueros (León) - Cangas de Narcea (Asturias) -266 KM



8 - Cangas del Narcea - Eidián - 239

Stage 7 Cangas de Narcea (Asturias) - Eidian (Pontevedra) -239 KM



9 - Eidián - Fisterra - 167

Stage 8 Eidian (Pontevedra) - Fisterra (A Coruña) -167 KM



10 - Fisterra - Fisterra - 0

Today is the last day, after breakfast everyone is free to go home as and when they want. As it is an enduro route, each client must find a way to go home. If it is a group of friends, we can find a transport for the motorcycles (Extra price that we must consult)



Motorcycle



CRF 250 L
+ \$1,031.26



XT 660 R
+ \$1,031.26



My own motorbike
+ \$0.00

Dates & prices

Options

Included



Guide



Support vehicle



Helm voor de bestuurder



Helm voor de passagier?



Breakfast



Dinner

Except first
and last
dinner



Hotel



Mechanic



Parking

Not included



Alcoholic beverages



Basic insurance



Damage deposit



Enduro body protection
kit

Extreme cold protection

Ferrys



kit



Local taxes



Flights



Lunch



Maps & Roadbook



Motorcycle rental



Motorcycle return to origin



National parks tickets



Non-Alcoholic beverages
water-coffee



On route snacks



Petrol & oil



Photo-video souvenir



Spare motorcycle



Tips



Transfers



Visas

Other information

MOTOS ACEPTADAS, NEUMÁTICOS y EQUIPO PILOTO Motocicletas ENDURO hasta 600 Autonomía mínima 125 Km. Neumáticos enduro de tacos. Equipo piloto completo 100% enduro. Traje de agua y farmacia personal Equipaje manejable y ropa cómoda

DOCUMENTACION NECESARIA Carnet de conducir. Seguro de viaje y accidente. Seguro del vehículo. Permiso circulación vehículo. Ficha técnica vehículo.

Kosten bij vroege annulering

Important notice, in case of cancellation:

The flight tickets, supplements and optional services subscribed in this tour regardless of the basic program, are subject to 100% of early cancellation costs.